

# BROADSHEET

Magazine of the Staffordshire & Worcestershire Canal Society



September 2023

Volume 65 Number 690

[www.swcanalsociety.co.uk](http://www.swcanalsociety.co.uk)



# Staffordshire & Worcestershire Canal Society 2022-2023

**President:** Tony Gregory (gregory.lowerpenn@gmail.com)

**Vice Presidents:** Steven Gray, Ann Pollard, Peter Freakley, Derek Overton, Geoffrey Whittaker JP, Robert Cox, Liz Osborn, Carol Aldridge & Chris Dyche.

## **Chairwoman**

Rhian Dobbs - 07909 974034  
dobbsrhian@gmail.com

## **Vice Chair & Broadsheet Editor**

Maxwell Dobbs - 07990 890116  
maxdobbs5@gmail.com

## **Treasurer**

Angela Clark - 07305 699432  
ab.clark@virginmedia.com

## **Secretary**

Ann Pollard - 01384 376585  
sunbeam2@btinternet.com

## **Website Social Media & Work Parties**

Adam Capewell - 07595 445589  
yamyam80.ac@gmail.com

## **Advertising, Marketing & PR**

Pauline Farnell  
pauline.farnell@veolia.com

## **Conservator**

Vacant

## **Non-Committee Posts**

### **Society Sales**

Vacant

### **Raffles**

Rosemary & Glyn Phillips

### **Length Scheme**

Vacant

### **Cruising Awards**

Ann Pollard - 01384 376585  
sunbeam2@btinternet.com

### **Membership Secretary**

Judith Gray  
wharfinger@blueyonder.co.uk

## **Committee Meetings**

Committee meetings held at the Bonded Warehouse, Stourbridge starting at 7:30, and are held at least 8 times a year, members may request to attend.

## **Printing**

Rotary Printers Ltd Stourport 01299 823839 studio@rotaryprinters.co.uk

The contents of this magazine are printed as a matter of information for members of the SWCS but may not necessarily be the official policy, or opinions of the Committee. No item may be used without the prior consent of the editor, except for comment by other Society magazines.

**Registered Charity Number 243702**

# Contents

Editorial	1
Chairwomans Remarks	2
In Memoriam - Lord Morris of Aberavon	4
Bratch Rally 2023	6
The Cut End Boating Song	9
Gailey Roundhouse Re-Opens	12
The Staffordshire & Worcestershire Canal Alfred E Jenks	13
Dimmingsdale Bridge Strike 2023 – A Timeline	14
Wolverley Court Lock Closure	16
Stourport Heritage Harbour 9th September	17
The Green Fields of the Dudley No 1	19
CaRT response to Government funding cuts	20

# Editorial

Welcome to the Autumn Broadsheet, I write this having just arrived home from our Rally at Bratch and somewhat later in the day than I would have liked. But as I am sure many of you have experienced life, work, the weather all seem to get in the way of boating and relating activities. My father once said “if the business gets in the way of you leisure change the business” . I am not sure he ever managed it and I doubt I will but I am sure having ambitions is a good thing.

As I was finalising the last edition there was an incident at Dimingsdale Bridge which is followed up in this edition, but again just as this copy is being finished we have had an incident at Wolverly Court Lock.

I have also includes details of the reproduction of “The Staffordshire & Worcestershire Canal” by Alfred E Jenks that has been produced by Julian Souter and Tony Gregory details can be found on how obtain a copy on page 13.

Max



## Chairwomans Remarks

Since settling down to write for this issue of Broadsheet I was hard pushed to remember what I wrote in the last Broadsheet. It has been a busy few months. I hesitate to say summer, as despite a glorious June the weather has been mixed. Whatever you've been up to over the summer months I hope that it has been enjoyable and that you're now looking forward to another season of Social Events at Bradmore.

We held the AGM in June, and the big outcome of this was the revised constitution, which was agreed at the AGM. No earth shattering changes just updating but also inclusion, should the need ever arise, that the society be wound down and how to do so legally. These documents are now all filed and with the Charities Commission. I truly hope that these additions will not need to be acted upon and that the SWCC will be around for many years to come.

Following on from the AGM, which was well attended, we've had some resignations (Fred Cooke as Conservator and Stephen Gray as President).

Phil Clayton has kindly taken over from Tony Gregory in organising our

speakers and Tony is now President of the Society.

I would like to thank all of our Committee Members and all those that support the running of the Society and the Social Meetings at Bradmore for their time. It truly makes a difference, and makes the Society what it is. Anyone that would like to become more active in the Society in any way would be greatly welcomed – whether as committee members or in any other aspect that they could offer support. In future, The Broadsheet, will be available for collection at the Bradmore Social Meetings. For those of you unable to attend they will be sent out as usual via post. However, for those that are able to collect, these savings on postage over a year will be considerable.

Many of the Canal Societies were born of the need to save the waterways in the 1960s and 1970s, the wheel turns and here we are again. On hearing the decision on the reduced funding for CaRT I was disappointed but not surprised. Sadly we were not able to attend the IWA Rally in Birmingham, and I would urge anyone, whether boater or land lubber to write to their MPs to lobby for more funding, to attend any r

# **VOLUNTEERS WANTED**

## **LENGTHSMEN**

**Is there a stretch of the canal  
you can keep an eye on  
and report any issues?**

## **NAVIGATION ISSUES**

**Spotted any issues that you  
think need raising with CRT?**

**Contact - Ann  
sunbeam2@btinternet.com**

## **REPRESENTATIVES**

**Would you be willing to attend  
waterways events and represent  
the society even if only for  
a couple of hours?**

## **COMMITTEE**

**Served on a committee before?  
Share your wisdom!**

**Never served on a committee  
before?  
Try something new!**

**Contact - Rhian  
dobbsrhian@gmail.com**

rallies, and support the IWA Fund  
Britain's Waterways Action Group.

On a more positive note, Stourport  
has been awarded Heritage Inland  
Port Status for our town and canal  
Basins. This will be celebrated on the  
9 th of September and the SWCC will  
have a stand there. It won't be  
included in this issue of Broadsheet  
but no doubt photos and a round up  
will make the next edition.

Finally, the Rally at Bratch was  
successful and there is a report  
further on in Broadsheet. It is the  
second year that a Society Rally has  
taken place since Covid, and with the  
success of both, another will be held  
next year. Put the date in your diary,  
first weekend after the August Bank  
Holiday.

Rhian



## In Memoriam - Lord Morris of Aberavon

By John Dodwell

The death of Lord Morris of Aberavon KG, KC, a former Attorney-General, at the age of 91 in early June might not be of great interest to Members, were it not for the vital role he played in the Government's 1967 decision to keep the inland waterways open with a future in a world of leisure and amenity. At that time, as plain John Morris QC, he was junior minister to Barbara Castle, then Minister of Transport in Harold Wilson's Labour Government. Whether there was a future for the canals lay in doubt. Officialdom regarded the canals as an outmoded transport method, fit largely for closing down and filling in. The Inland Waterways Association and others thought otherwise – and said so loudly! But with the Beeching cuts affecting the railways, would the canals be next? This was in a period when it was feared the southern Staffs & Worcs Canal would be closed – which partly led to the Society's formation.

There was hope. The southern Stratford-on-Avon Canal had been rescued from dereliction in 1964. The Society had made arrangements with British Waterways in 1965 to start restoring the closed Sixteen Locks on

the Stourbridge Canal. For nearly three years, volunteers from all over the country worked each weekend, led by the Society's own David Tomlinson. Whilst BW staff dealt with the lockgates, the volunteers shovelled tonnes of mud out of the lock chambers and patched up the brickwork. But was this effort all going to be swept away by massive closures of the network?

All was uncertain when in May 1967 John Morris came to Stourbridge



Mr. John Morris, Parliamentary Secretary to the Minister of Transport, speaking at the opening ceremony. Officials of British Waterways, members of Staffordshire & Worcestershire Canal Society and Brierly Hill's new M.P., Mr Fergus Montgomery, are also in the Picture.

formally to reopen the restored Stourbridge Canal. Hopes for the whole network rose. Surely now the Government would keep the Canals? *After all, was it credible for a Government minister to reopen a canal one month and then for the Government declare the death knell shortly after?* There was a lot of hanging on tenterhooks that summer before Mrs Castle's historic momentous decision that September that the canals DID have a future.

John Morris knew the significance of what he did in May 1967 – indeed, in 2007, he unveiled another plaque at the Society's 40<sup>th</sup> anniversary celebrations.

Nowadays, the Stourbridge Canal is well used both on the towpath and by boats. Indeed, how many people are aware that the Stourbridge Canal was ever derelict? Or of its significance in the wider waterways campaigns of the 1960s?



Presented by: JOHN TURNER

**J. & H. Trimmings**

BOAT CANOPIES, BOAT, CAR & CARAVAN TRIMMING  
HOUSEHOLD UPHOLSTERY – MOTOR CYCLE SEATS

Ashwood Marina, Greensforge, Kingswinford, West Midlands DY6 0AQ  
Telephone: 01384 279527



By Rhian Dobbs

Following on from last year's 250th Celebration of the Staffs and Worcs Canal our second Society Rally since Covid took place, again at Bratch. The exceptional planning and hard work of the Rally Committee before, during and after ensured smooth running. All the boats that were booked in turned up and a jolly time had by all. The weather was kind, very kind, bearing in mind the dismal summer we've had. There were Historic boats, trade boats and trade stands, caterers, an onsite bar and we were also supported by Worcester

Birmingham & Droitwich Canal Society and Stafford Riverway Link. Our own Society stand was active selling books and we were also successful in signing up new members.

On the Saturday afternoon the rally was officially opened by our President Tony Gregory, and he welcomed our guests – Sir Gavin Williamson, MP South Staffs; Richard Parry CEO CaRT; Mark Evans Chair of Womborne Parish Council and Jan Evans, Councilor Womborne Parish Council and Richard Preston Regional Operations Manager for CaRT. Richard Parry responded to the



## SIGNS & SYMBOLS

TRADITIONAL SIGNWRITING & VINYL GRAPHICS - PICTORIAL & HERALDIC ARTWORK  
145 Birmingham Street, Stourbridge. DY9 7PP - [signsandsymbols@hotmail.co.uk](mailto:signsandsymbols@hotmail.co.uk)



official welcome and Sir Gavin Williamson was very interested in historic narrowboat Aquarius. Following a tour of the rally site our guests were treated to a reception onboard narrowboat Ernest Thomas (kindly on loan from the South Staffs

Narrowboat Co) with champagne and cakes donated by committee members. After the reception they were able to visit the site in their own time, and they all did!

Events such as this enable us to highlight the waterways to those who might not normally be aware of it, and also to meet and speak with others than can support the waterways and their cause. It was an opportunity for us to feedback to local government at all levels and to CaRT who all attended.

South Staffs Water had again kindly let us use the towpath adjacent to the Pumphouse for all of our

stands. Without their co-operation the rally would not be feasible. It was interesting to hear that Sir Gavin Williamson along with the local Parish Council had met with South Staffs water at the Pumphouse on the Friday and that it was a positive meeting. We are all hopeful that one day the Pumphouse will be open for the public.

We also had updates on the emergency works at Wolverley Lock which has had a big impact on boaters. CaRT were out in force on the Stourbridge Branch of the closure and the canal was busier than usual with boats unable to complete the Worcester Ring. We were advised that CaRT had been in contact with the Hire Boat Companies, and it was suggested that maybe extra volunteer



lock keepers could be drafted in to assist those trying to get back to base.

Vegetation was mentioned, and it is issues with the contractors in the West Midlands has led to a less than satisfactory outcome to vegetation on the towpaths.

The locks were busy on the weekend, providing the public ample opportunities to view the locks in action and speak with the CaRT volunteers who were onsite. The food was good, there were ample opportunities to shop, to engage with the various canal societies, the atmosphere convivial and the Bar provided a focal point and a convenient area to view the boats and locks.

Saturday evening saw a number of attendees returning to the site for an unplanned and unplugged sing along. Whilst I can't assure you of their attendance next year it certainly added to the event.

The site was cleaned up on Sunday and Monday morning and other than a few boats remaining we left the rally site as we found it.

For those of us that left on Monday it was beautiful weather for boating and perfect end to well attended and well received rally.

# The Cut End Boating Song

By Rosemary & Glyn Phillips

When the time came to celebrate 250 years of the Staffs & Worcs Canal, 2022, I remembered a society annual dinner dance at which we celebrated the 20<sup>th</sup> anniversary of the society. The dinner dance committee at that time ( Margaret & Alan Emuss, Ann & Robert Edwards and Glyn & myself ) decided to write a song which outlined society activities over the years.



I thought the occasion might be interesting to newer members and a reminder to older members, and these are getting fewer each year, so began to search through our canalia but unfortunately my filing system let me down. Although I could find the photographs taken at the time. ( the 7<sup>th</sup> member was Pete Dodds, who accompanied us on the whistle. ) I was unable to put my hand on the words of the song.

However, several months later Margaret Emuss came to the rescue and so it's thanks to her that I have been able to include them here.

If you want to hear it sung, come to the meeting in September.

**1,**        *Friends it was in the late fifties  
That Whitehall remembered our cut  
They inspected, reflected, directed  
That all of our locks should be shut  
But a set of stout hearted fellows  
Broke off from I.W.A.  
And proclaimed they would fight for  
survival  
And all fears of a closure allay.*

**Chorus**        *Long live the Staffs &  
Worcester  
Hail the society  
Our canal is thriving*

*In spite of B.W.B.  
And spare a thought for the  
Stourbridge  
With it's waters so muddy and grey  
For we reopened the sixteen  
As well as I.W.A.*

**2,**        *In those days the cut was a sad  
place  
With the pounds full of rubbish and  
muck  
So the lads set to clear them by boating  
Singing we'll get to Hayward with luck  
So their boats pushed the silt from the*

*channel*

*As they cruised over every bit  
Pushing and shoving through bridge  
holes  
That were full to the surface with \_ \_ \_  
(mud).*

### **Chorus**

**3,**      *As the years passed things got  
better  
And we knew our canal would survive  
So we turned our attention to  
Stourbridge  
When we saw it we vowed strive  
To open those locks up through  
Wordsley  
And the board said you do it yourself  
Now the boats cruise right up to  
Dudley  
While Round Oak oil the locks at the  
Delph.*

### **Chorus**

**4,**      *But the fight for that cut's not  
over  
The arm at Stourbridge must stop  
We've talked to the Board and the  
Council  
A marina proposed at the top  
But the Board won't manage to close  
it  
Though they let all the bridges fall  
down  
For we're dredging it out from the  
Junction  
While they're filling it in from the  
town.*

### **Chorus**

**5,**      *Let us salute our Chairmen  
We've had some fine ones in our day  
Do you remember Malcolm  
The Brain of the outfit they say  
But his poor heart was saddened  
On the cut he could see not a boat  
So he went off and started to build  
them  
Now half the country's afloat.*

### **Chorus**

**6,**      *Let's pay a tribute to Alan  
Our smallest chairman of all  
When he stood at the front at the  
meetings  
On a stool he was not five feet tall  
But he always looked to his Laurel  
As he sailed through our bridges divine  
He conserved them, preserved them,  
renamed them  
Gave them bridge plates so bold and  
so fine.*

### **Chorus**

**7,**      *After Alan came Roger  
Is it true he's really a squire?  
He was a non-boating chairman  
His engine just wouldn't fire  
When the Board went to work at  
Newbridge  
They sank piles right round his gang  
plank  
Then they backfilled right over the  
tiller  
Now Woden is part of the bank.*

## Chorus

8,        And now for our present  
Leader  
A garland for Chairman Roy  
He used to dive on the Avon  
And moor his boat to a buoy  
When he inspected the Stour Cut on  
Seaford  
At Stourport the end of the route  
He went for a dive in the basin  
But forgot to put on his wet suit.

## Chorus

9,        But let us end with respect sirs  
For those who have struggled and gone  
Remember Jim Robbins and others  
Whose love of canals always shone

And we must replace them with  
youngsters  
Whose hearts are fresh filled with pride  
For our cut, the pearl of the system  
From Stourport to Heyward Bridge  
wide.

## Chorus

Original copy shows

Verse 1	All
Verse 2	Glyn
Verse 3	All
Verse 4	Alan
Verse 5	Girls
Verse 6	Margaret
Verse 7	Boys
Verse 8	Robert
Verse 9	All

## Ashwood Marina

Not so much a mooring, more a  
way of life



**The Team At Ashwood Marina Offers a Comprehensive Package of Facilities and**

**Services to Complement Our Beautiful Moorings:**

### WE NEED YOUR BOAT!!

We urgently need to replenish our stock of used  
Narrowboats to sell.  
We offer a caring service and competitive brokerage  
fees, so if you want to sell, call us.

### Bespoke New Builds and Re-Fits from Perrydale Narrowboats

We work with you to create your perfect narrowboat  
for your liveaboard/cruising dreams



Visit [www.perrydalenarrowboats.co.uk](http://www.perrydalenarrowboats.co.uk) to view gallery

### Re-sprays:

To give your boat the ultimate external make  
over.

### Moorings:

Towpath style moorings available in a linear  
setting.

### Craning & Docking:

A monthly service, giving ample time for engine  
and blacking works to be completed. Space  
available for DIY blacking and fit out work or  
we can offer an extensive range of hull works  
and repairs.

Follow us on:



Ashwood Marina is located on the Staffs & Worcester Canal between Rocky and Greensforge Locks



Ashwood Marina, Kingswinford. DY6 0AQ. Tel: 01384 295535  
[info@ashwoodmarina.co.uk](mailto:info@ashwoodmarina.co.uk) . [www.ashwoodmarina.co.uk](http://www.ashwoodmarina.co.uk)



# Gailey Roundhouse Re-Opens

Unfortunately this wasn't able to make the last Broadsheet and was provided with the kind permission of Margaret Beardsmore Photography.

Many of you will remember Eileen who owned the Roundhouse for many years before sadly passing away last year.

The shop has been closed for some time as Eileen wasn't well for many months.

Karen is her daughter and has now reopened the shop at Gailey, full of your favourite gifts - and my new 2024 England Waterways Calendars.

She is just as lovely and friendly as Eileen so do pop in if you're passing.



## **Martin Brookes**

### ***FOR ALL YOUR MARINE WORK***

**On the Stourbridge Canal, between Stourton and Wordsley Junctions**

*Coach Painting - Boat Building - Fitting Out - Compliance Work  
New Installation - Engine Servicing - Repairs - Welding  
Hull Blacking - Breakdown Call Out Service*

***Diesel Tank cleaning and fuel filtering with minimum need for drilling  
or cutting or emptying tank Mobile or at Wharf Service***

**Bookings for Wharf Craneage NOW available**

**All Work Personally Undertaken  
Waterways Craft Guild Accredited**

**Free no obligation quotation  
07802 444370 or [mb.tramp@btinternet.com](mailto:mb.tramp@btinternet.com)**

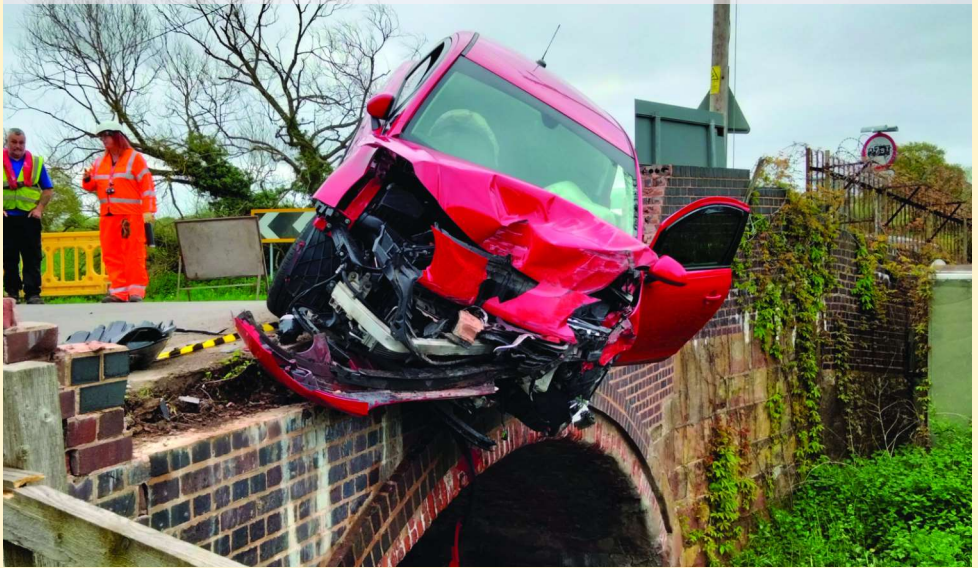
BY ALFRED E. JENKS.

up members of the Canal Society only (not those in the FaceBook group and £15 to non-members (+ £2.50 p&p). Copies will be available at the Stourport Heritage Harbour Event on the 9th September and at forthcoming meetings at Bradmore. You can also email Julian Souter (julianat103@aol.co.uk) for a copy.

**All profits will be donated to the society**



# Dimmingsdale Bridge Strike 2023 – A Timeline



By Tony Gregory

At 2.00 am on 6<sup>th</sup> May there was a road traffic accident, and the southern parapet was demolished. The car was left perilously hanging over the canal. The female passenger reportedly opened the door, and fell some 10 feet into the canal. She sustained minor injuries and was taken with the driver to hospital.

This was the Bank Holiday weekend, and whilst the local Highways Dept. erected plastic barriers and traffic lights, there was no progress until Tuesday 9<sup>th</sup> May. The damage was surveyed by CRT staff, and very soon formulated a plan to keep the navigation open. During the day,



debris was removed from the towpath. Pontoons were collected from Greensforge by road and positioned over the submerged debris to ensure that a clear channel was available.



## Work commences in earnest!

On 15<sup>th</sup> May scaffolding was erected by CRT's contractors.

On 16<sup>th</sup> May the site was prepared by contractors in preparation for brick laying.

By 11.00am on 18<sup>th</sup> May a boat and excavator had arrived from Atherstone by road, and was launched at Castlecroft; by 1.00pm was on site and lifting debris from the water guided by a man in a dry suit.



The brickwork was completed by 24<sup>th</sup> May, and the scaffolding removed soon after..



As I write, the traffic lights remain, awaiting the erection of the crash barrier that had not been replaced from the previous strike some 5 years ago!

It has to be said that the local CRT team and their Quick Response Team did a great job in dealing with what looked like a long and protracted problem. Well done all.

Sadly, the bridge plate did not turn up with the debris, and is lost. No use fishing for it with a magnet as it was an aluminium reproduction!

# Wolverley Court Lock Closure

Just as we were putting the edition of Broadsheet together we became aware of an significant incident at Wolverley Court Lock.

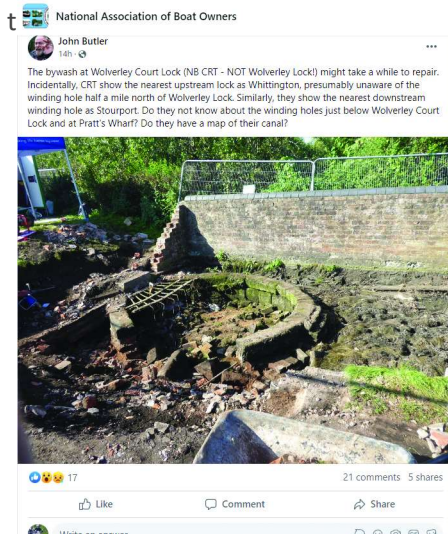
Initially it was expected that the lock might be out of use for a few days however, it quickly became apparent that the issue was far more significant and that the repairs would take weeks to complete.

Part of the weir crest has washed away, taking the footings of the wall with it. To complete these works, there will be a need to remove the unstable wall and rebuild the weir crest.

We understand that there had been an issue with the brickwork that was being monitored, what had not been known was that the area behind was sand and was

being eroded. Unfortunately the the eroded material and its effect was not foreseeable.

The lock is expected to remain closed until



## PHIL JONES

**HATHERTON MARINA, HATHERTON JUNCTION,  
STAFFS & WORCS**

**DRY DOCK, CRANEAGE, GRIT BLASTING, PRESSURE WASHING**

**HULL BLACKING, STERNGEAR, ANODES, ETC.**

**STEELWORK ALTERATIONS, LENGTHENING, OVERPLATING**

**NARROWBOAT BROKERAGE & SALES**

**BOAT SAFETY EXAMINATIONS & REMEDIAL WORK**

**VINTAGE AND MODERN ENGINE SALES, REPAIR AND INSTALLATION**

**TEL/FAX: (01785) 715988**

**Mobile: 07831 153028**



# Stourport Heritage Harbour 9<sup>th</sup> September



The designation 'Heritage Port' recognises the historic importance of Stourport as a key inland port - a title it will share with cities such as Chester and Exeter.

As a first step to opening up The Basins, Stourport has applied for and is declaring Heritage Port status. This title is awarded by the Maritime Heritage Trust and National Historic Ships. It gives support and focus for tourism and underlines the importance of our local heritage when planning decisions are to be made.

To mark this award, Stourport Forward and Stourport Yacht club are organising a celebration. Their efforts are being coordinated by a team of local representatives, with support from bodies such as the Stourport Town Council, Stourport Civic Society, The Inland Waterways Association and local businesses. The event will be held on September 9<sup>th</sup> and we'd love you to join us.

What this means for the town is that the Heritage Port status will stimulate

tourism and encourage local planners to focus more on the heritage aspects of the town.

Every year, many tourists to Stourport arrive by canal and see Stourport much as it was two hundred years ago when it was a thriving inland port.

They moor their narrow boats and take a look around the well-kept locks and canal basins surrounded by beautiful Georgian buildings, with the Angel pub around the corner and the River Severn flowing peacefully by.

It's easy to forget why Stourport came into being and what a hidden treasure The Basins represent for the town. It's time we made The Basins more accessible to Stourport residents and to tourists arriving by road.

On the 9<sup>th</sup> of September between 10am and 5pm there will be a celebration of the Heritage Port Status which will be centred on the Stourport Yacht Club (under the Stourport Clock Tower) and this will be your chance to visit this landmark building.

There will be a brief presentation at 12:00 performed by the Mayor of Stourport followed by a brief talk from the IWA representative, David Struckett, and the unveiling of a sign for Stourports Heritage Inland Port status. Canal & River Trust

representatives, STC councillors and WFDC councillors have been invited.

There will be a BBQ (outside unless weather intervenes), and bar inside.

The Civic Society will hold a display inside the Yacht Club and IWA and the Staffs & Worcs Canal Society will have covered displays inside the YC grounds. There will also be a Tombola to raise funds for Ukranian refugees.

Around the basin

CRT have installed a new sign (near narrow lock on Severn)

Historic narrow boats will be visiting The Basins alongside Stourport's Bramble, and will be open to view during the day. (until about 3pm)

Fetch Theatre will be running workshops for children (10.30 –2.30 and 1.30 -3.30) (Fee £10 for a 2 hour workshop) on Tontine grounds

Stourport Forward are running guided walks around the heritage sites and buildings in The Basins (10.30 –12.00 and 1.30-3.00)

Other events

There will be some Boatyard talks on the day (times displayed in the Yacht Club)

The River King will be running trips along the Severn every 45 minutes (Adults £7, Children £5, Under 5's Free, on the hour)



**CREATING  
DESIGN, PRINT  
& WEBSITES**

SINCE 1970

01299 823839

[www.rotarycreativegroup.co.uk](http://www.rotarycreativegroup.co.uk)

Mitton Street, Stourport-on-Severn, DY13 9AA

**#ALLTHINGS** Copywriting  
Brochures  
Banners  
Adverts  
Leaflets  
Pads  
Business Cards  
Letterheads  
Folders  
Business Starter Packs  
Newsletters  
Invitations  
Wedding Stationery  
Order Of Service  
Posters  
Logos  
Websites  
Marketing  
Branding



# The Green Fields of the Dudley No 1

The Dudley No.1 Canal at the Waterfront, Brierley Hill, has a notably strange appearance. The canal has been left looking like a 'football pitch' after a green covering appeared on top of it. One passer-by even thought the stretch of water, near Merry Hill shopping centre, had been 'filled in'.

Footage of the canal was posted on The only way is Dudley page on Facebook on Monday, September 4.

An accompanying message said: "The cut on the Waterfront looking like a football pitch. What is it?" "The whole canal network is covered in it," one reply said. "We walk the dog around the canals, he thought it was grass and tried to walk on it... soggy doggy." Another said: "Drove past that this morning, thought they'd filled it in."

Others suggested it could be duckweed or blue-green algae. However CaRT has confirmed it is Azolla, also known as water fern.

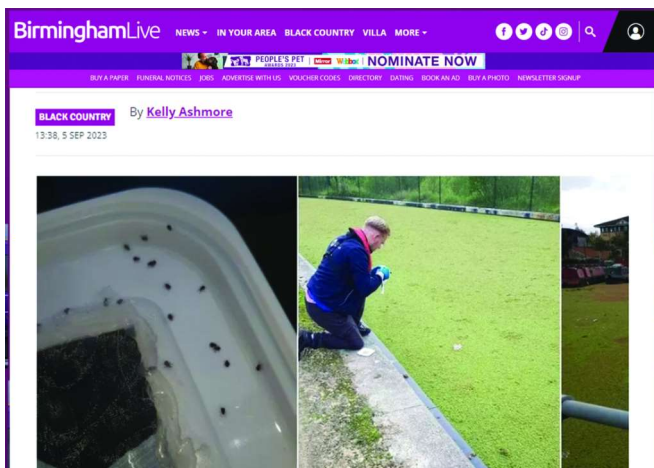
Responding to one user on X, formerly known as Twitter, who commented the water looked "a bit green", the trust said: "We are aware that some section of canal have a problem with Azolla (water fern) this year. We are

planning to release weevils which will eat the weed and clear up the problem for us."

The weevils breed quickly and feast on the problematic water weed. The bugs are capable of clearing entire lakes and canals in a matter of weeks. Once the weed has dispersed the weevils die off as their only food source is the weed.

Azolla is an invasive non native species, originally from Asia, that has been introduced to the UK. A nominally tropical plant, it has adapted to the colder climate. It can form mats up to 30 centimetres (12 in) thick and cover 100% of a water surface, preventing local insects and amphibians from reaching the surface.

Hopefully by the end of the month the green scourge will have been vanquished!



# CaRT response to Government funding cuts

Following the announcement from the Government, we are issuing a stark warning that a reduction in grant funding of over £300 million in real terms will threaten the future of the nation's historic canals, leading to their decline and to the eventual closure of some parts of the network.

The reduced funding comes at the same time as the costs of maintaining historic canals are increasing, due to the growing impact of climate change, with more periods of drought and extreme storm events taking their toll on ageing 250-year-old infrastructure.

Richard Parry, our chief executive, warned of the risks, "We are tasked by the government to care for and manage safely this important and historic infrastructure. The government has confirmed the value and importance of the nation's canals and their vital role in our health and well being, for wildlife and nature, and in supporting jobs and the UK economy. Yet, at the same time, they have announced a funding decision which puts the very future of canals at grave risk,"

"By sharply reducing their investment in the critical work to care for and safely manage this vulnerable national canal infrastructure, the Government is failing to recognise the full cost of sustaining the vital benefits they

provide."

"Our industrial canal heritage is as vital today as it was in the past, and will continue to be in the future, by bringing the benefits of green space and nature corridors into urban areas, as well as contributing to flood defences and transferring water to areas of shortage. It is a critical part of our national infrastructure, and its decline would impact communities across the country."

Funding cuts will have a potentially devastating impact on our ability to care for and protect the 2,000-mile-long waterways network and its heritage – the locks, reservoirs, bridges, tunnels, aqueducts and embankments.

The nation lost many hundreds of miles of waterways in the 20th century, but in the past fifty years, they have experienced an extraordinary renaissance.

A reduction in government funding would mean deep cuts to canal maintenance and repair, leading ultimately to canal closures.

*The full statement can be read on the CaRT website.*

# THE BONDED WAREHOUSE

Canal Street, Stourbridge DY8 4LU

**Stourbridge Navigation Trust Ltd.**

Registered Charity No. 1094294

**OPEN WEEKEND**  
**21st&22nd OCTOBER 2023**

## **BOAT ENTRY FORM**

NAME \_\_\_\_\_

ADDRESS \_\_\_\_\_

\_\_\_\_\_

\_\_\_\_\_ POST CODE \_\_\_\_\_

TEL. No. \_\_\_\_\_

EMAIL \_\_\_\_\_

Name of Boat \_\_\_\_\_ Type \_\_\_\_\_

Length \_\_\_\_\_ Draft \_\_\_\_\_

Boat entry is FREE but submission of this form is essential. Boat event plaque information overleaf.

No trading allowed from boats.

**All boats wishing to attend the Rally should read and sign the conditions overleaf. (Unsigned entry forms will not be accepted).**

*Return completed form to:*

The Harbourmaster  
Stourbridge Navigation Trust Ltd.  
2 Canal Street, Stourbridge DY8 4LU

Telephone: 01384 395216

Email: [stourbridge-trust@btconnect.com](mailto:stourbridge-trust@btconnect.com)  
[www.thebondedwarehousestourbridge.co.uk](http://www.thebondedwarehousestourbridge.co.uk)

## **CONDITIONS OF ENTRY**

- Moorings are at the absolute discretion of the organisers, who reserve the right to move any boat before or during the event. All crew must comply with the organisers instructions at all times. Some bankside moorings are becoming silted/obstructed and may require the use of your gangplank.
- All boats entered for the event must display a current CRT Licence and must carry at least £1,000,000 (one million pounds) Third Party Insurance cover. The organisers cannot be held responsible for any injury to individuals or damage to property during the event.
- Your personal information will be securely stored by Stourbridge Navigation Trust Ltd. and will only be used for the purpose of this event or any future event organised by us. An entrant may examine their personal details held at any reasonable time by prior appointment with the Trust.
- Our General Data Protection Regulation policy (GDPR) can be seen on our website [www.thebondedwarehousestourbridge.co.uk](http://www.thebondedwarehousestourbridge.co.uk)
- Be aware of illnesses caused by infections in the water.

**I agree to abide by the conditions of entry set out above:**

*Print Name* \_\_\_\_\_

*Signature* \_\_\_\_\_

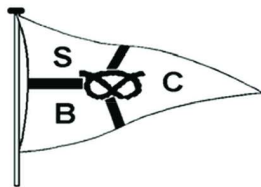
*Date* \_\_\_\_\_

If you are willing to volunteer to help with the event in any way please indicate this by ticking the box. ☐

### **Boat Plaques**

Please tick the box to order the usual year plaque at a cost of £4.50, payable at the event, available from the Harbourmaster. ☐

# STAFFORD BOAT CLUB



**DO YOU NEED TO PAINT YOUR BOAT OUT OF  
THE WATER OR IN A HEATED WET DOCK ?**

**WANT TO HIRE A ROOM FOR A SEMINAR  
WITH MULTIMEDIA PROJECTOR OR TO  
CELEBRATE THAT SPECIAL OCCASION ?**

**NEED COAL, DIESEL BUG TREATMENT, LOO  
BLUE, SACRIFICIAL ANNODES, RED DIESEL,  
PUMP OUT, PLASTIC CARD PRINTING,  
GARMENT PRINTING, BANNER MAKING AND  
MUCH MUCH MORE ?**

***Why not give us a ring or visit our  
website for more information and prices.***

**[www.staffordboatclub.co.uk](http://www.staffordboatclub.co.uk)**

**Telephone 01785 660725**

**Fax 01785 662222**

**Stafford Boat Club, Maplewood, Wildwood, Stafford. ST17 4SG**

# Staffordshire & Worcestershire Canal Society

## MEMBERSHIP RENEWAL FORM

Please return to  
Mrs Judith Gray  
29 Verity Walk  
Wordsley

Stourbridge  
West Midlands

DY8 4XS

email:- wharfinger@blueyonder.co.uk



### YEARLY SUBSCRIPTION (1st April-31st March)

Please tick appropriate option

- |                          |   |        |
|--------------------------|---|--------|
| <input type="checkbox"/> | Single Membership   | £15.00 |
| <input type="checkbox"/> | Family at the same address Membership                           | £15.00 |
| <input type="checkbox"/> | Junior (up to 18 years of age) and those in full time education | £1.00  |

Full Name .....

Address .....

.....

.....

Post Code..... Telephone.....

Email .....

[www.swcanalsociety.co.uk/privacy/](http://www.swcanalsociety.co.uk/privacy/)

**To enable the society to collect Gift Aid, we need to update the records for all members who we are eligible to collect for. Even if you have previously done so, please complete and return this form to the membership secretary.**

### GIFT AID DECLARATION

- ☐ I am a UK tax payer. I would like the Society to treat all membership subscriptions and donations I make in the future and have made *in the last 4 years*<sup>(1)</sup> as Gift Aid donations until I notify you otherwise.

<sup>(1)</sup> If you have not been a member or tax payer for this period please delete.

Note: You must pay an amount of income tax or capital gains tax equal to the amount we reclaim on your subscriptions & donations. Remember to notify us if you no longer pay tax or wish to cancel this declaration.

Signature .....

Date .....

Bank details for electronic payments: Lloyds Bank. Sort Code: 30:99:83 Account no: 02673373

Payment made by EFT ☐

Payment by Cheque/Cash ☐

I wish to receive Broadsheet by post. ☐

I wish to receive Broadsheet electronically. ☐

## **Diary Dates**

### **Bradmore Meetings**

*A series of talks and presentations, usually waterways orientated but with occasional eclectic contributions on a variety of other subjects - open to the public free of charge.*

*Meetings held at the Bradmore Community Centre, Birches Barn Road, Wolverhampton starting at 7:30pm*

#### **September 11th**

Tony Gregory presenting Patrick Thorn's S&WC photos part 2  
or surprise guest!

#### **October 9th**

David Jones - The Stafford Branch Canal : a Journey of Discovery

#### **November 13th**

Neil Barnett - The Severn Estuary by Narrowboat

#### **December 11th**

Quiz with bring and share supper TBC

## **Local Events**

#### **9<sup>th</sup> September**

Stourport Heritage Harbour - Stourport

#### **21<sup>st</sup> -22<sup>nd</sup> October**

Stourbridge Navigation Trust Open Weekend

## **Electronic Broadsheet**

*We are now making all future copies of Broadsheet and loose inserts available electronically. This would be by "opting in" for those members who chose to receive Broadsheet electronically.*

*There is no intention of discontinuing the sending out of "hard copies" to other members.*

*Please contact Steve Gray by email to [wharfinger@blueyonder.co.uk](mailto:wharfinger@blueyonder.co.uk) with your name and email address if you wish to "opt-in".*

*Note:- email addresses will only be used for the communication of society information and will not be passed to any third party.*



## Staffordshire and Worcestershire Canal

46 Miles and 43 Locks  
From Stourport Basins  
To Great Haywood Junction

